

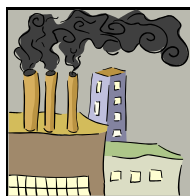


Yale Center for Perinatal, Pediatric and Environmental Epidemiology (CPPEE)



One Church Street, 6th Floor

A series of seminars will be hosted by Michael Bracken and Brian Leaderer, Co-Directors of the Yale Center for Perinatal, Pediatric and Environmental Epidemiology (CPPEE) located at 1 Church Street, 6th floor. These seminars will provide a forum for faculty, students, and research staff from YSPH, as well as from other professional schools at Yale, to join us for guest lectures and engage in lively discussion. Admission is **free** and the seminars are open to anyone who would like to attend.



Thursday, January 8th, 2009
1.30pm

George D. Thurston, ScD
Professor, NYU School of Medicine

*“Diesel Air Pollution and Asthma
in New York City”*

RSVP - adrienne.hoey@yale.edu or 764-9375
<http://publichealth.yale.edu/cppee/>



The mission of the Center is to promote the health of women and children through epidemiologic research investigating the impact of environmental, genetic and clinical factors on pregnancy, birth and childhood.

